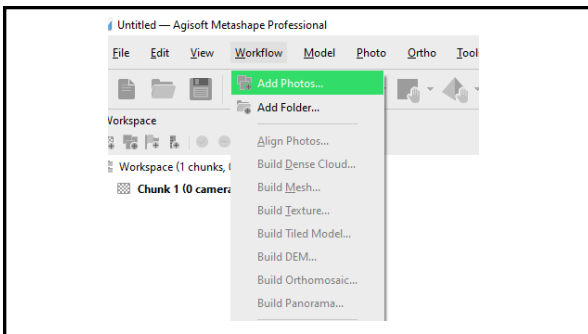


1

Open Agisoft Metashape Professional software

2

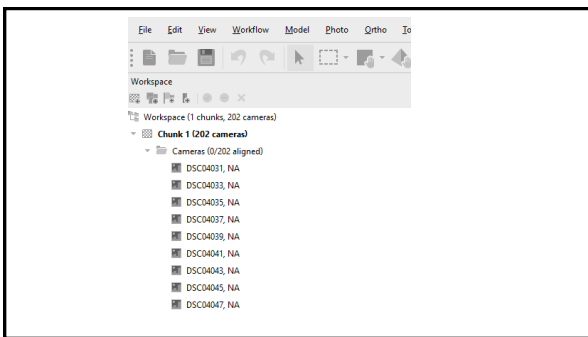


3

Add photos

Find the folder with your photos and add them to the project

4

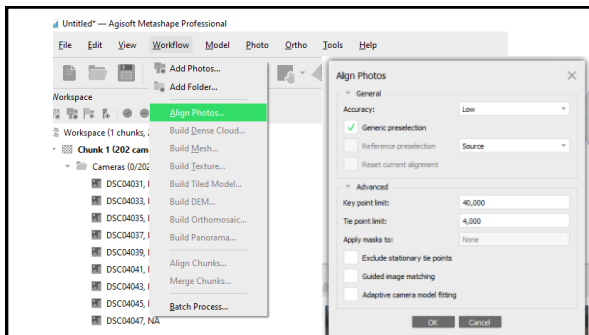


5

Photos were added to chunk 1. The chunk contains 202 cameras.

NA next to the camera means Not Aligned

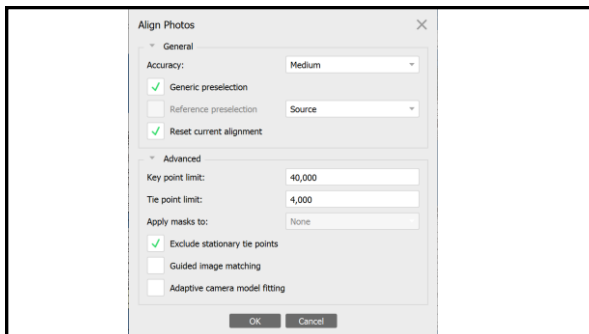
6



7

Align the images

8

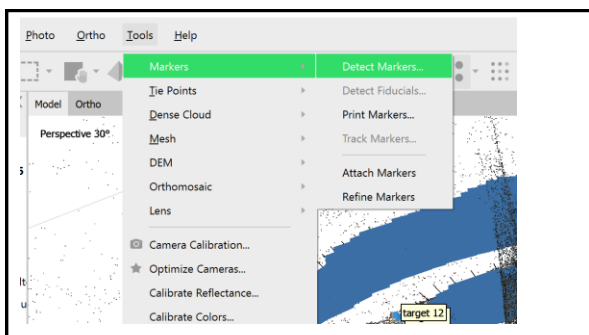


9

Higher Accuracy level – longer processing time, higher chance for good alignment

Generic preselection can speed up alignment; may cause misalignment of some images

10

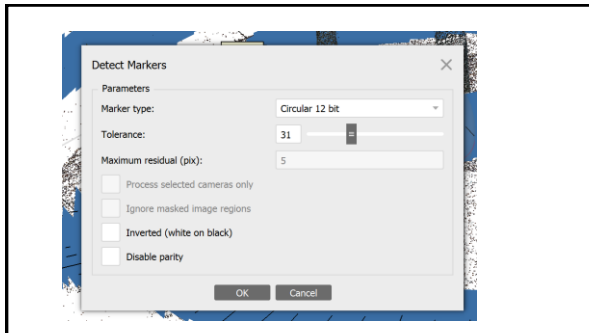


11

Detect markers

Detects the Agisoft's circular markers

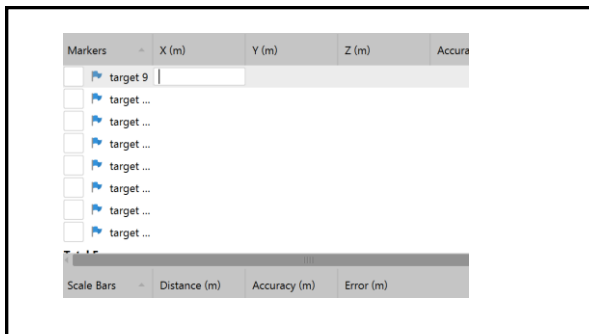
12



13

If not all markers are detected
increasing the Tolerance can help

14

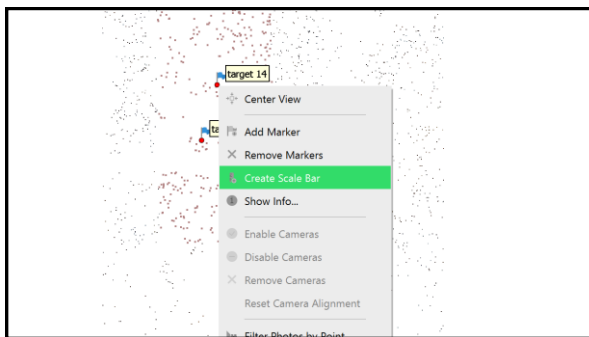


15

In reference pane, markers are
displayed.

Known coordinates of control points
can be added to reference the
project

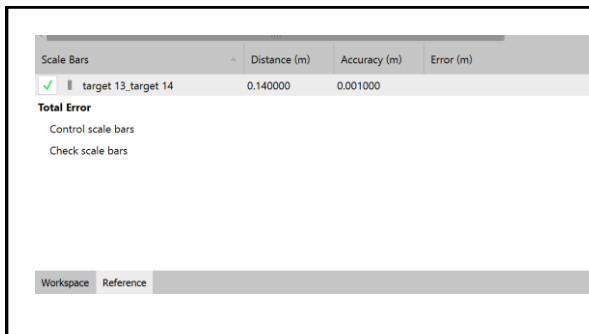
16



17

If distance between ground points is
known a scale bar between detected
(or manually added) markers can be
established

18

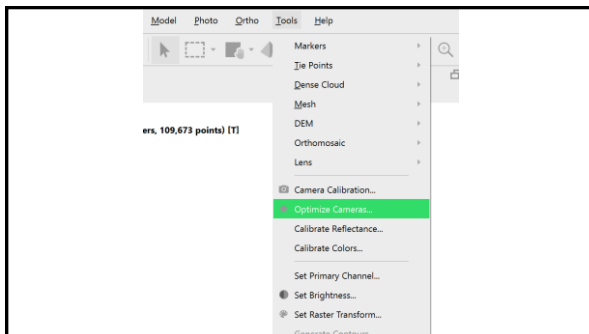


19

The added scale bar appears in Reference pane

The known distance is added to a scale bar

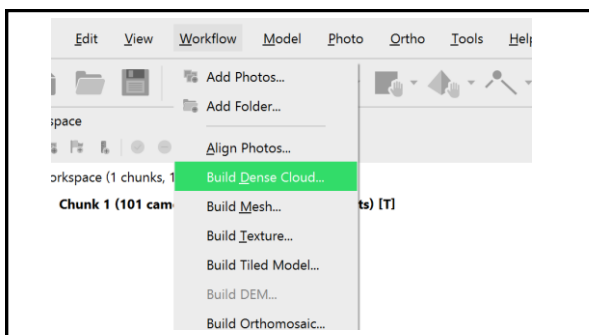
20



21

After adding a reference information camera parameters should be optimized

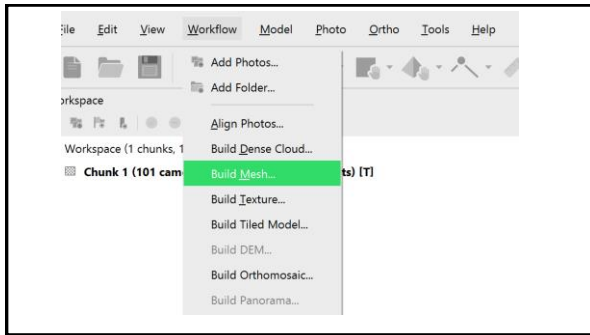
22



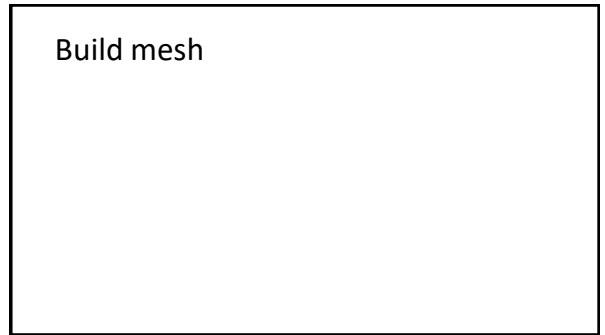
23

Build dense cloud

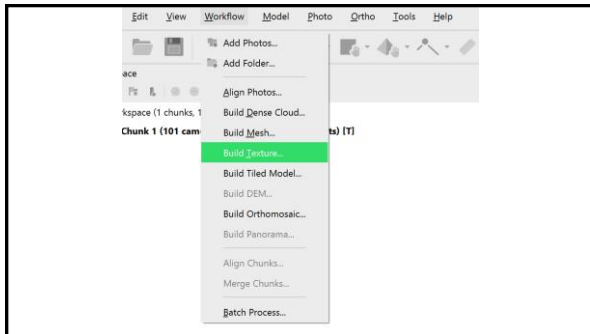
24



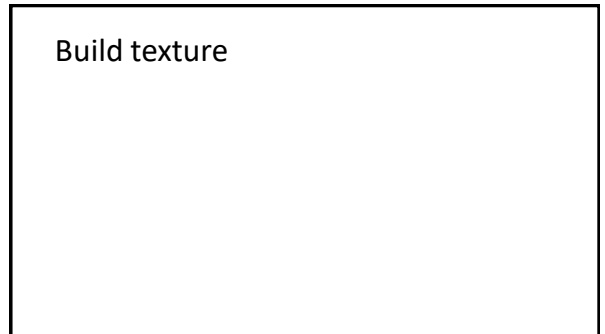
25



26



27



28