

Newsletter

Spring 2021 edition



Co-funded by the
Erasmus+ Programme
of the European Union

FRAME project launched

At the end of 2020, a project titled Forests, climate change mitigation and adaptation: Higher Education Cooperation in Mekong region (FRAME) was launched. The project is supported by the ERASMUS+ program, specifically by Key Activity 2 Capacity building in higher education. FRAME aims to strengthen forestry higher education in Laos and Thailand based on the priority themes of 'Sustainable forest management' and 'Forest restoration & rural livelihoods'; with the crosscutting themes of climate change mitigation & adaptation. A key challenge for both countries is to make forest management more sustainable, socially inclusive, and to conserve and restore forests while providing development opportunities.

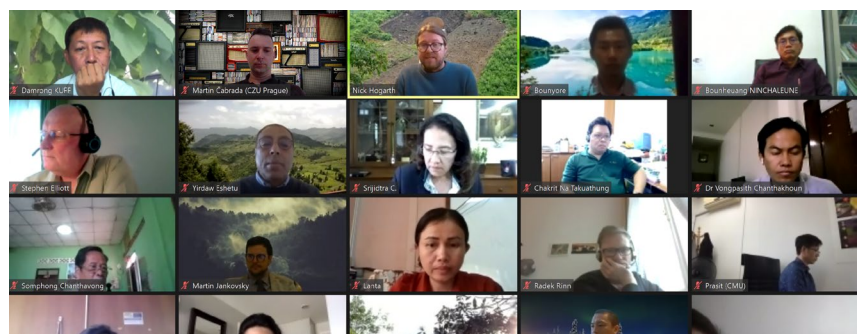
FRAME is coordinated by the University of Helsinki with the support of the Czech University of Life Sciences Prague. The partner universities from Laos and Thailand are Savannakhet University, Souphanouvong University, Kasetsart University and Chiang Mai University.

You can find more information at frameerasmus.eu or on the Facebook profile.

FRAME Kick-off Meeting

The kick-off meeting for the FRAME project was held online on February 16, 2021, due to the Covid pandemic situation. The meeting was attended by key representatives from the six partner institutions and marked the beginning of the project.

The event was launched with opening words from Dr. Nicholas Hogarth, a University Lecturer at the University of Helsinki, and Ms. Antonella Giorgio, a Project Adviser from the European Commission Education, Audiovisual and Culture Executive Agency (EACEA). They both highlighted the importance of the FRAME Project in tackling pressing environmental challenges in the region and expressed their excitement about the upcoming presentations.



This was followed by presentations from all involved partners.

At the end, the project manager Mr. Dipjoy Chakma presented principles of Partnership, work-package responsibilities and expectations.